



VITAL SIGNS

Measuring the Vitality of South Wood County

Presented March 2011

Written By:
Central Wisconsin
Economic Research Bureau



College of
Professional Studies

incourage
community foundation



In an era of constant change and limited resources, good data is critical in making sound, informed decisions.

In June 2010, Incentive Community Foundation introduced Vital Signs, a series of economic indicators that track the economic health of greater south Wood County. Now, we are pleased to partner with Central Wisconsin Economic Research Bureau, led by Dr. Randy Cray, to provide an in-depth analysis of this research. Using this, area groups and organizations can make informed decisions about whether their time and financial resources are being utilized to provide the greatest impact.

The difficult economic environment that our community has faced during the past decade is reflected in the data. It tracks items such as homelessness, foreclosures, and unemployment figures. It would be easy to become disheartened by it. But we must understand where we come from in order to make changes and necessary progress. This data will provide a baseline that we can work from to create future growth.

Making positive change on any one of these indicators requires collaboration between organizations. In fact, many organizations played a role in this report by contributing data and information. Additionally, our Workforce Central project is a local partnership of employers, philanthropy, government, education and service provider organizations that are working together to strengthen our region's economy. This project is one example of how we are influencing positive change through partnerships.

State and Federal budget cuts will impact our community's ability to support individuals and families in need. However, by using Vital Signs data, we know where the areas of critical need are, so we can work to address them most efficiently and effectively.

We live in a community of engaged, committed, and savvy individuals and organizations that work every day toward a vision of a vibrant and prosperous community. I am confident that greater south Wood County's Vital Signs will continue to improve as we move forward together.

Sincerely,

A handwritten signature in black ink that reads "Kelly Lucas". The signature is fluid and cursive.

Kelly Lucas

CEO

Incentive Community Foundation

ABOUT VITAL SIGNS

Information is as vital to a healthy community as clean air, safe streets, good schools and public health. Access to relevant and credible information along with the necessary tools to be involved and engaged is essential for our community. Vital Signs is one tool for individuals and organizations to gain better access to important information about their community. Using a series of indicators to look at the economic health of greater south Wood County, Vital Signs provides a micro-county focus to support sound decision making with good information.

Vital Signs is a project of Incurage Community Foundation. Through our focus on community improvement and strategic philanthropy, Community Foundation meets local needs by connecting resources and people – working together, learning together and sparking new solutions.

Collaboration is critical to creating an informed community. One way that we're doing this is through partnerships with several local and national organizations, including UW-Stevens Point, Mid-State Technical College and Massachusetts Institute of Technology.

In addition to this report, the Community Foundation will host community forums to present Vital Signs research to the public. For upcoming reports, work is underway to incorporate

indicators from our entire service area of greater south Wood County including Rome in Adams County, which is part of Nekoosa School District.

The Community Foundation is pleased to partner with Central Wisconsin Economic Research Bureau (CWERB) to provide in-depth analysis on our Vital Signs research, which is reflected in this report. CWERB is a part of University of Wisconsin – Stevens Point's School of Business and Economics. CWERB's mission is to bring timely economic analysis and information to the UW-Stevens Point service area (Portage, Marathon and Wood counties) and to help foster economic development in our region. As part of its mission, CWERB publishes Economic Indicator Reports, which address and analyze local economic conditions. Recent papers published in the Economic Indicators series have dealt with: tourism in central Wisconsin; health care in the region; migration into and out of the counties of Portage, Marathon, and Wood; the high tech industry base of Central Wisconsin; and the economic significance of small business to the region.

Funding for Vital Signs is provided by Incurage Community Foundation and the John S. and James L. Knight Foundation. Special thanks to the following organizations and agencies for providing data for this report: Wood County Human Services and South Wood County Homelessness Initiative Committee.

Written By:

Central Wisconsin Economic Research Bureau

Randy F. Cray, Ph.D.

Professor of Economics, CWERB Director

Scott Wallace, Ph. D.

Associate Professor of Economics,
CWERB Research Associate

James P. Draxler

Student Research Assistant

Brittany J. Melby

Student Research Assistant



College of
Professional Studies

This Report Supported By:

incurage

community foundation

www.incuragecf.org

**John S. and James L.
Knight Foundation**

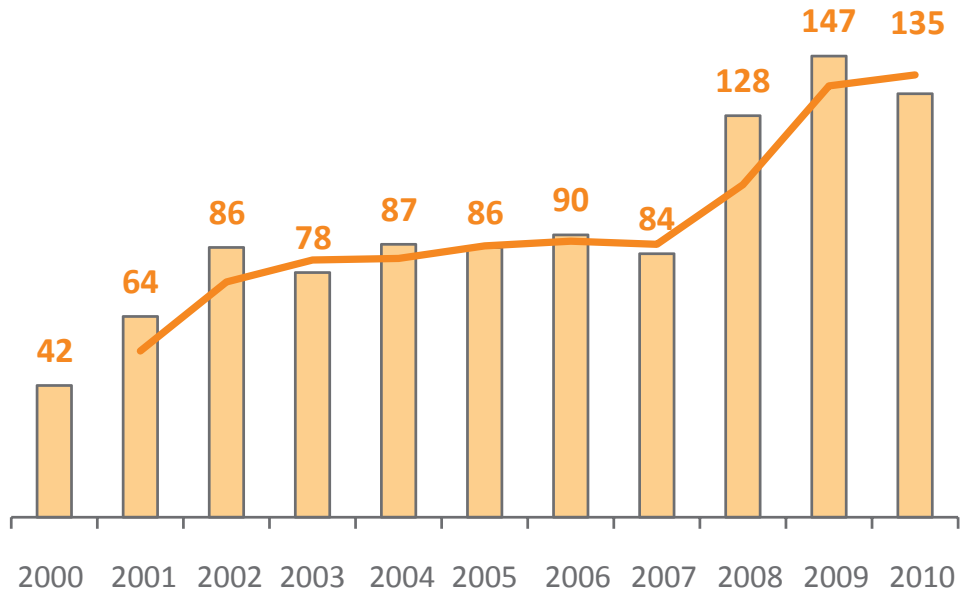
www.knightfoundation.org

www.informationneeds.org

SOUTH WOOD COUNTY FORECLOSURE FILINGS

(THROUGH DECEMBER 2010)

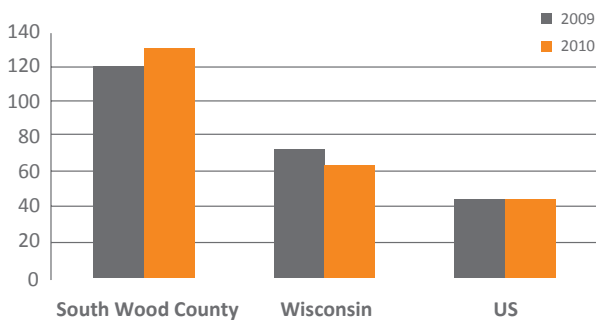
Foreclosure data is an important indicator of local family financial distress. The inability to pay off a debt obligation is strongly tied to one's employment and income. South Wood County (SWC) foreclosure filings have been trending upward since the year 2000. The deterioration of employment in the paper products industry and the recession of the early to mid-part of the decade played a key role in driving the numbers upward. In 2008, the number of housing foreclosures shot up to 128 from the previous year's total of 84.



Source: <http://www.wcaa.wcourts.gov> ¹

2009 VS 2010 FORECLOSURE RATE

% out of # occupied housing units with foreclosure rating



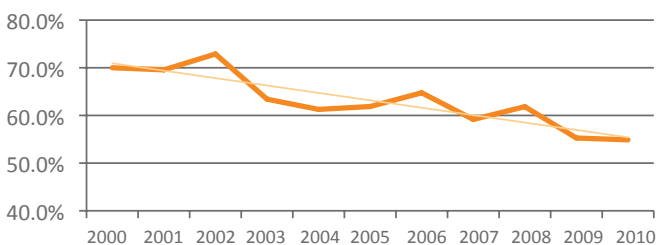
Source: <http://www.realtytrac.com> ²

This is directly related to the Great Recession and the fallout that ensued. In 2010, the number of foreclosures declined to 135. In 2009, the number of foreclosures was 147. So a slight improvement took place in 2010.

However, when comparing 2010 to 2000, the number of foreclosures has risen by over three-fold. Also, note that the 2010 foreclosure rate graph shows that for south Wood County, one out of every 130 housing units was in foreclosure. This does compare favorably to the state rate in which one out of 64 homes were in foreclosure and to the U.S. rate of one out of 45 homes. How does south Wood County compare to Wood County in terms of foreclosure activity?

% OF WOOD COUNTY FILINGS

from South Wood County

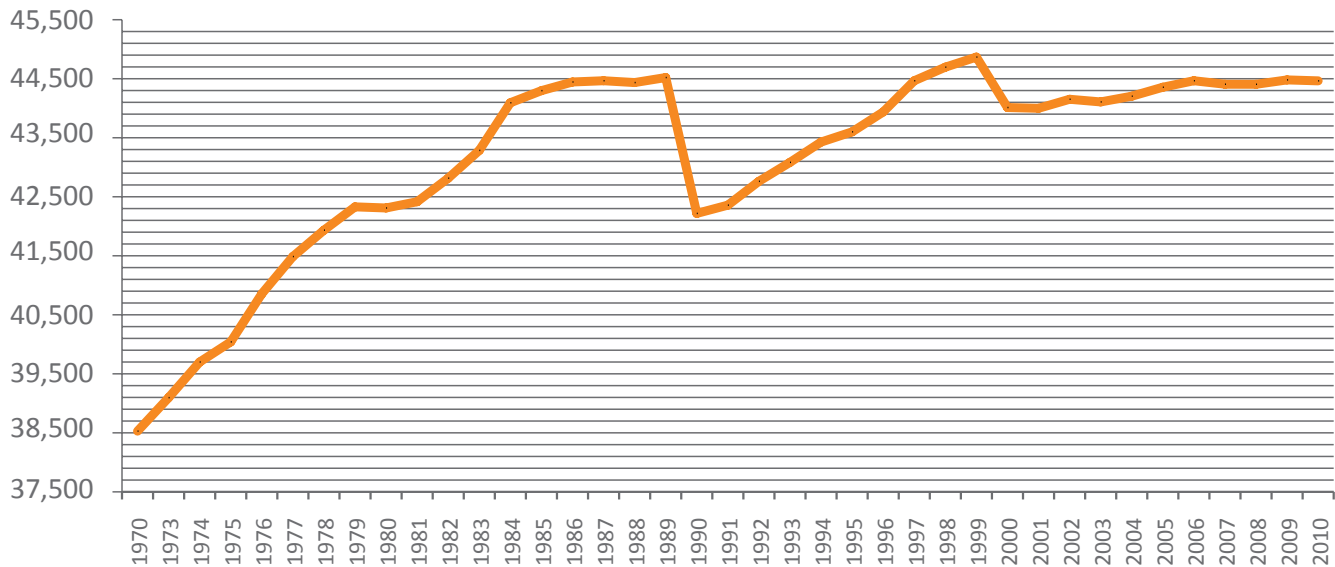


Source: <http://www.wcaa.wcourts.gov> ¹

The graph of Wood County filings shows that at the beginning of the decade, about 70% of the foreclosure filings were from SWC. Over the course of the decade, this percentage trended lower, reaching a plateau of 55% in 2010. The graph clearly shows that over the past decade, year in and year out, the majority of foreclosures have originated from the southern part of Wood County.

SOUTH WOOD COUNTY POPULATION TRENDS

(INCLUDES 2010 MOST RECENT ESTIMATE)



South Wood County's total population as of the 2010 estimate came to 44,464. This area includes the following municipalities: CRANMOOR, GRAND RAPIDS, PORT EDWARDS (Township & Village), RUDOLPH, SARATOGA, SENECA, SIGEL, BIRON, VESPER, NEKOOSA, PITTSVILLE, and WISCONSIN RAPIDS

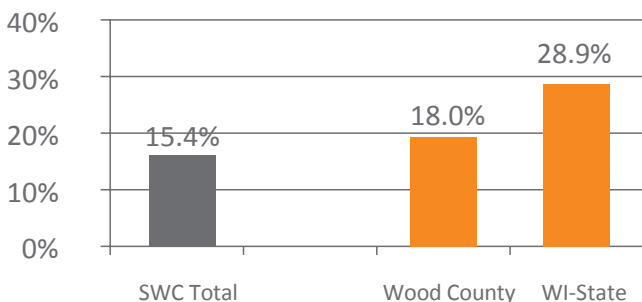
Source: <http://www.doa.state.wi.us>³
Wisconsin Department of Administration

Population trends give important insight into the economic vibrancy of an area. The Population Trends graph indicates that SWC population expanded from about 38,500 in 1970 to approximately 44,500 in 1985. The population level changed little from 1985 to 1990. The recession of the early 1990s saw people leaving the area with the population trending lower

to 42,300. By 1999, the population of SWC recovered to 44,700. The recession of early 2000 depressed population numbers, but by 2001, the population started to slowly recover. By 2010, the SWC population managed to climb to 44,300.

If we just look at 1989 to 2010 we see that the SWC population has not grown. Over the entire 40-year period, the SWC population grew by just 15.4% from 1970 to 2010. During the same period, the state of Wisconsin's population grew by nearly 30%. Thus SWC grew by approximately half the state rate. This outcome is indicative of the economic circumstances facing the SWC area. Moreover, the demographic structure of the population shows that the fastest growing segments are above 50 years in age. The average age of the population of SWC is increasing. If this trend continues, there will be ramifications for the workforce, the demand for age-related services, and the SWC economy in general.

POPULATION GROWTH 1970-2010

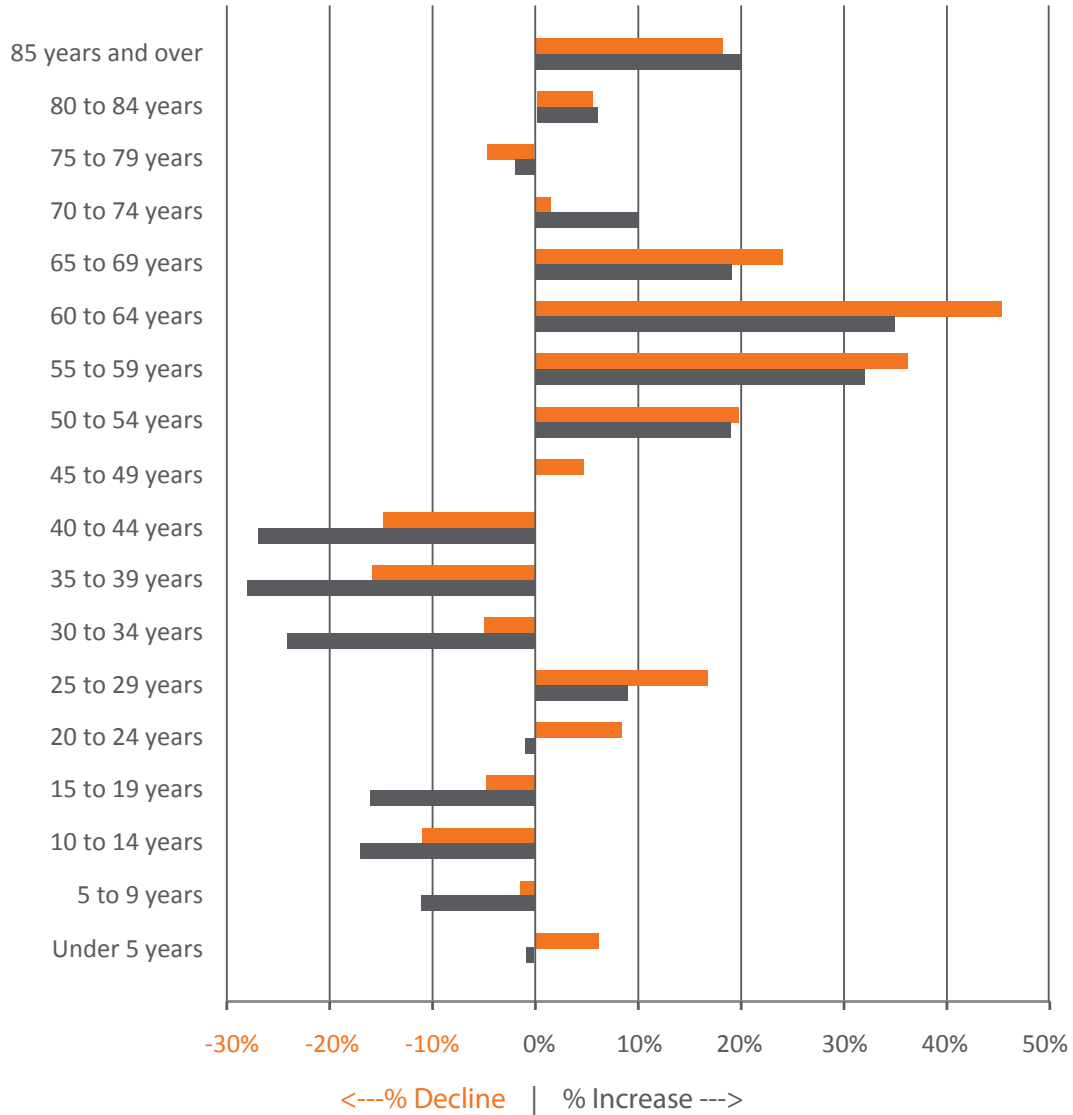


Source: <http://www.doa.state.wi.us>³
Wisconsin Department of Administration

POPULATION CHANGE FOR SOUTH WOOD COUNTY VS STATE OF WISCONSIN

(FROM 2002 TO 2010)

■ 2010 State Population
 ■ 2010 South Wood County Population



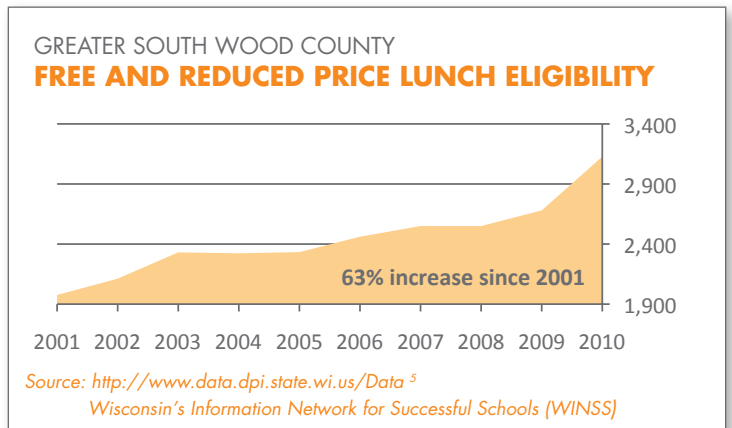
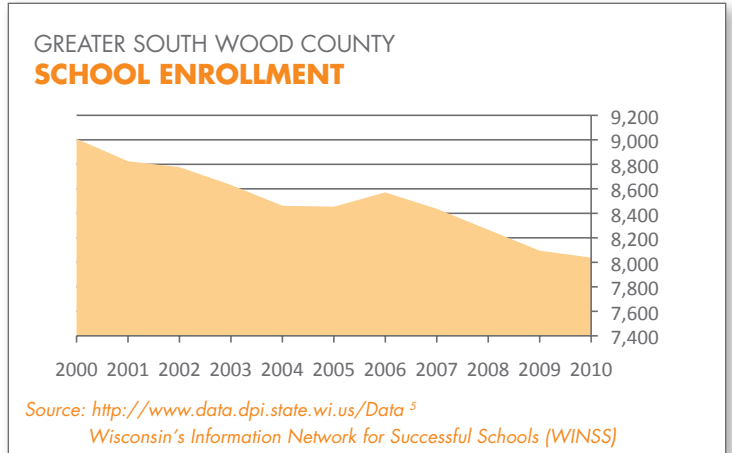
Population by Age Group

Source: Economic Modeling Specialists Inc. (EMSI) 4

GREATER SOUTH WOOD COUNTY SCHOOL ENROLLMENT AND ECONOMICALLY DISADVANTAGED STUDENTS

Another indicator of the health and vitality of greater south Wood County is school enrollment. Over the 2000 to 2010 time period, the number of children enrolled in school has dropped from 9,008 to 8,039; a decline of approximately 11%. In comparison, the school enrollment numbers for the state of Wisconsin remained constant over the period.

More troubling than the decline in enrollment has been the huge increase in the number of students coming from economically disadvantaged backgrounds. The number of these students rose from 1,976 to 3,128 over the 2000 to 2010 time period, a 63% increase. Moreover, 3,128 out of the 8,039 students enrolled in the greater south Wood County area qualify for free or reduced price lunches. Specifically, 39% of the children meet the National School Lunch Program criteria for assistance because of evidence showing that students' family income is below federal guidelines. Children in households with incomes at or below 130% of the federal poverty rate, or \$28,665 annual income for a family of four, receive free meals.



School Enrollment Trends	2010	2009	2008	2007	2006	2005	2004	2003	2002	2001	2000
Wisconsin Rapids District	5,582	5,654	5,711	5,834	5,862	5,818	5,704	5,787	5,893	5,948	6,144
Nekoosa District	1,331	1,338	1,395	1,440	1,468	1,386	1,466	1,524	1,543	1,533	1,529
Port Edwards District	451	464	474	470	514	515	522	531	524	515	520
Pittsville District	675	639	686	693	727	735	770	790	817	829	815
Greater South Wood County:	8,039	8,095	8,266	8,437	8,571	8,454	8,462	8,632	8,777	8,825	9,008

Econ Disadvan Trends	2010	2009	2008	2007	2006	2005	2004	2003	2002	2001
Wisconsin Rapids District	2,168	1,787	1,751	1,837	1,655	1,585	1,534	1,574	1,341	1,272
Nekoosa District	599	553	456	502	462	429	413	402	402	375
Port Edwards District	153	153	115	8	146	141	140	118	132	115
Pittsville District	208	187	228	203	198	178	236	237	237	214
Greater South Wood County:	3,128	2,680	2,550	2,550	2,461	2,333	2,323	2,331	2,112	1,976

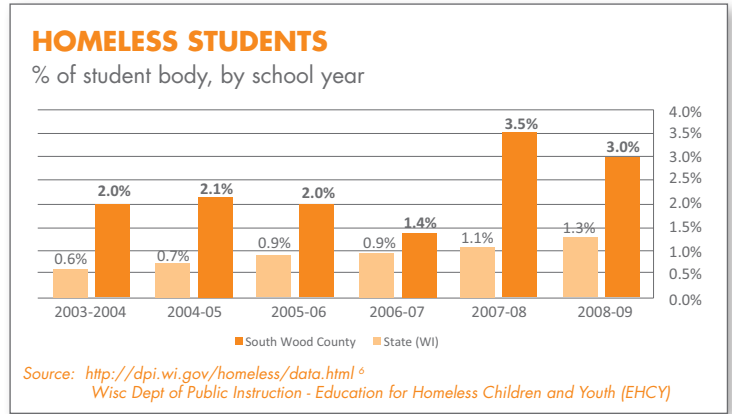
Source: <http://www.data.dpi.state.wi.us/Data>⁵
Wisconsin's Information Network for Successful Schools (WINSS)

STUDENTS IDENTIFIED AS HOMELESS

REPORTED BY SCHOOL DISTRICT

The number of south Wood County students identified as being homeless has fluctuated over the 2003 to 2009 time period. However, the trend has been unmistakably upwards over the past six years. In 2003-04 the number of children defined as being homeless by the McKinney-Vento Act was 172. By the 2008-09 academic years the number was 243.

As it turns out almost all of the homeless children in SWC attend school in the Wisconsin Rapids school district. SWC has a higher percent of its student body classified as being homeless than that of the state of Wisconsin as a whole. This holds true for every academic year from 2003-04 to 2008-09. In most of these years, the rate of homelessness in SWC is more than



double that of the state. For example, in 2008-09 the SWC rate for student homelessness was 3.0% compared to that of 1.3% at the state level. Moreover, the number of children classified as lacking a fixed, regular, or adequate night-time residence seems to be growing.

STUDENTS IDENTIFIED AS HOMELESS REPORTED BY SCHOOL DISTRICT

School District	2008-09	2007-08	2006-07	2005-06	2004-05	2003-04
Nekoosa	4	8	5	0	0	0
Pittsville	8	4	0	0	0	4
Port Edwards	3	4	4	4	0	0
Wisconsin Rapids	228	273	105	170	178	168
Total SWC	243	289	114	174	178	172
% chg from prev yr	-16%	154%	-34%	-2%	3%	
Total State (WI)	10,955	9,331	8,108	7,864	6,384	5,358
% chg from prev yr	17%	15%	3%	23%	19%	

SWC Enrollment	8,095	8,266	8,437	8,571	8,454	8,462
State (WI) Enroll	872,311	873,690	875,543	874,098	863,495	878,217

% OF STUDENT BODY HOMELESS (ALL GRADES)

	2008-09	2007-08	2006-07	2005-06	2004-05	2003-04
South Wood County	3.0%	3.5%	1.4%	2.0%	2.1%	2.0%
State (WI)	1.3%	1.1%	0.9%	0.9%	0.7%	0.6%

Source: <http://dpi.wi.gov/homeless/data.html>
Wisc Dept of Public Instruction - Education for Homeless Children and Youth (EHCY)

The McKinney-Vento Act defines homeless children and youth as individuals who lack a fixed, regular, and adequate night-time residence. The term includes children and youth who are:

- sharing the housing of other persons due to loss of housing, economic hardship, or similar reasons;
- living in motels, hotels, trailer parks, or campgrounds;
- living in emergency or transitional shelters
- abandoned in hospitals;
- awaiting foster-care placement;
- living in a primary night-time residence not used as a regular sleeping accommodation;
- living in cars, parks, public spaces, abandoned buildings, substandard housing, bus or train stations, or similar settings; and/or
- migratory children living in any of the circumstances described above.

SOUTH WOOD COUNTY HOMELESS INITIATIVE

2009 DATA (3/24/10)

Organization Name	Impending Homeless				Actual Homeless			
	South Wood County		Wood County		South Wood County		Wood County	
	2004	2009	2004	2009	2004	2009	2004	2009
North Central Community Action Program	30	252	40	411	53	57	97	75
Wood County Department of Social Services	39	99	59	110	7	20	10	22
Total	69 cases	351 cases	99 cases	521 cases	60 cases	77 cases	107 cases	97 cases

Source: South Wood County Homeless Initiative Committee, September 2010 ⁷
(Fluctuation of numbers may be due to improved tracking mechanisms and temporary ARRA funding sources.)

Impending homelessness refers to individuals who are at risk of losing their current place of residence. Impending homeless figures for SWC show the number to be 69 in 2004. By 2009, homeless figures reached 351. Please note that each case represents a SWC household. The actual number of homeless

cases rose from 60 in 2004 to 77 in 2009. If the impending homeless data from the North Central Community Action Program and Wood County Department of Social Services are correct, then the actual homeless cases will most likely take a sharp upward turn when the 2010 data becomes available.



WAGES NEEDED TO PAY FOR BASIC NEEDS

(APRIL 2010)

The table shows the estimated expenses for a one adult household, one adult, one child household, and two adult, two child household. The table also gives a number of possible work hour and wage rate combination scenarios. The results show that a single adult household would have to have a wage rate of \$10.49 to \$11.98 per hour, depending on the hours worked, to earn the \$21,812 needed to cover the basic needs of living in SWC. A one adult, one child household would need to earn \$34,472 and have a wage rate of \$16.57 to \$18.94, depending on the hours worked. Lastly, a family with two adults and two children would need \$45,462 to cover the basic needs of living in SWC. To earn this amount, a household would have to have a wage rate of \$21.86 to \$24.98 per hour. Of course, it is also true that a two adult household could have two breadwinners in the family, which could reduce the wage range to \$10.93 to \$12.49 with doubling the number of hours worked by the family.

The main thrust of the table is that minimum wage level jobs, paying \$7.25 per hour, are not adequate in providing the basic needs of a household. At the very least a two-adult household with two children would have to have an average wage rate of \$10.93 per hour and require each adult to work 2,080 hours during the year (or 40 hours times 52 weeks). If each adult was paid the equivalent of 35 hours per week for 52 weeks, the average wage rate needed would be \$12.50 per hour.

WAGES NEEDED TO PAY FOR BASIC NEEDS IN SOUTH WOOD COUNTY

April 2010

See below for further Explanation on 1 through 15	One Adult Household	One Adult and One Child (age 6)	Two Adults and Two Children (ages 3 & 12)
1 Rent	\$ 473	\$ 586	\$ 713
2 Utilities	\$ 292	\$ 292	\$ 292
3 Food	\$ 200	\$ 367	\$ 668
4 Health Care	\$ 172	\$ 232	\$ 258
5 Child Care	\$ 0	\$ 546	\$ 821
6 Transportation	\$ 299	\$ 304	\$ 391
7 Personal Care Items	\$ 50	\$ 100	\$ 200
8 Miscellaneous	\$ 50	\$ 100	\$ 200
9 Monthly Expenses Total Lines 1 – 8	\$ 1,536	\$ 2,527	\$ 3,543
10 Annual Expenses Line 9 x 12 months	X 12 \$18,432	X 12 \$30,324	X 12 \$42,156
11 Est. Social Security & Medicare Taxes	\$ 1,669	\$ 2,637	\$ 3,478
12 Est. Federal Income Taxes	\$ 1,454	\$ 318	(\$1,114) Refund due to Additional Child Tax Credit
13 Est. WI Income Taxes	\$ 257	\$ 1,193	\$ 942
14 Gross Wages Needed to Cover Lines 10 - 13	\$21,812	\$34,472	\$45,462
15 Hourly Rate of Pay Needed to Meet Expenses:			
a. Line 14 ÷ 2,080 hours	\$10.49	\$16.57	\$21.86
b. Line 14 ÷ 2,028 hours	\$10.76	\$17.00	\$22.42
c. Line 14 ÷ 1,976 hours	\$11.04	\$17.45	\$23.01
d. Line 14 ÷ 1,924 hours	\$11.34	\$17.92	\$23.63
e. Line 14 ÷ 1,872 hours	\$11.65	\$18.41	\$24.29
f. Line 14 ÷ 1,820 hours	\$11.98	\$18.94	\$24.98

Key

- Based on 2009 HUD 50 percentile median rent in Wood County (heat not included in rent)
- Based on Food Share Limited Utility Allowance
- Based on Food Share 2010 allotment estimates
- Based on www.health-insurance-2008.org/ Wisconsin average single health insurance premium of \$859 with the employee paying 20% of the premium on an after-tax basis (Head of Household +1 @35% higher) (Family @ 50% higher)
- Average 2009 child care costs in South Wood County per CCRRCW website (Two adult and two children based on one child 3+ full time care and one child 6+ part time care (each costing at least \$3,000)
- Self-Sufficiency Standard for Wisconsin (2004 report + \$100 due to the cost of fuel)
- Estimate
- Estimate
- Self-explanatory
- Self-explanatory
- Line 14 times 7.65%
- Calculated on Line 14 wages using 2009 tax rules (excluding the 2009 only Making Work Pay Credit)
- Calculated on Line 14 wages using 2009 tax rules (for the two adult family assumed one adult earned \$20,000 and the other the remainder)
- \$7.25 is the minimum wage in Wisconsin
- Based on 35-40 hours worked per week

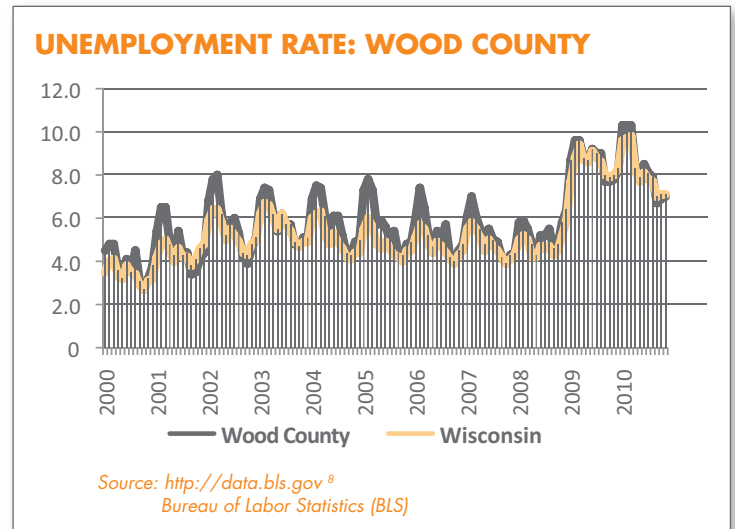
Source: South Wood County Homelessness Initiative Committee, September 2010 ⁷

WOOD COUNTY UNEMPLOYMENT

(THROUGH NOVEMBER 2010)

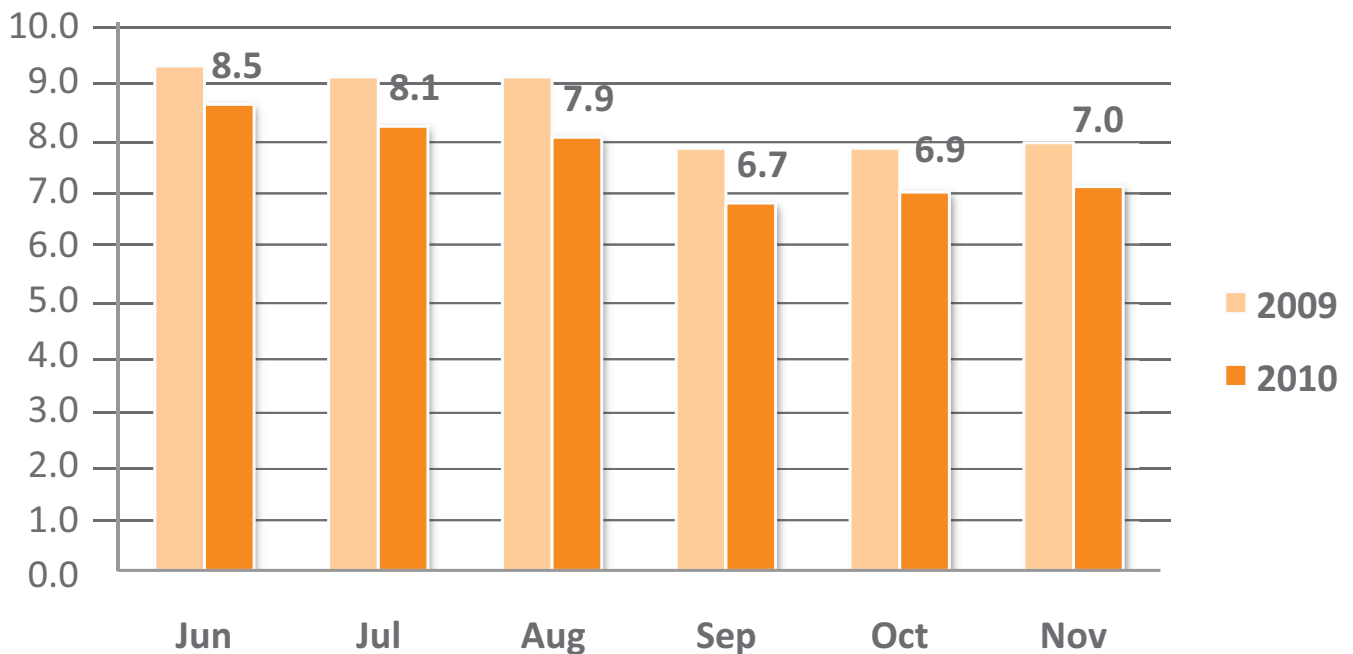
Generally speaking, the Wood County unemployment rate has been above the state of Wisconsin's unemployment rate during the years 2000-2010. The graph on the Wood County unemployment rate shows that matters took a sharp turn for the worst in mid-2008. From the start of the Great Recession until mid-2010, the unemployment rate has been at historically high levels. Only recently has there been some downward movement in the unemployment rate.

Moreover, the bar chart on Current Unemployment Percentage: Wood County shows that from June to November the 2010 unemployment rate is below its 2009 counterparts. Thus, improvement has taken place in the unemployment rate level. However, the unemployment rate still remains at an unacceptably high level.



CURRENT UNEMPLOYMENT PERCENTAGE: WOOD COUNTY

Compared to a year ago



Source: <http://data.bls.gov>[®]
Bureau of Labor Statistics (BLS)

WOOD COUNTY INITIAL UNEMPLOYMENT INSURANCE CLAIMS

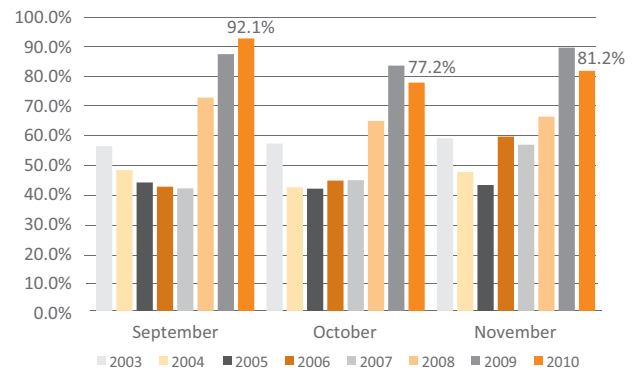
The unemployment insurance claims data for 2007-08, 2008-09, and 2009-10 give tentative indication of the development of a trend. For the most part, the December 2008 to November 2009 time period was the highest in recent memory in the number of initial unemployment claims. This of course corresponds to the deepest part of the recession. The December 2009 to November 2010 period shows a general decline taking place in the claims data. However, these figures are for the most part still well above the 2007-08 numbers for Wood County.

The second bar chart shows in detail the September-November movements in unemployment insurance reciprocity rates for Wood County for 2003-2010. This histogram clearly shows the sharp progression of the unemployment reciprocity rate over the years. The reciprocity rate measures the percentage of unemployed who are covered by unemployment insurance. For example, in November 2010, 81.2% of the unemployed were covered by unemployment insurance and approximately 18.8% were not covered. In other words, about one out of every five

unemployed people in Wood County was not covered by unemployment insurance. Several extensions made by the federal government to the number of weeks a person could receive unemployment insurance helped to raise the coverage ratio.

UNEMPLOYMENT INSURANCE RECIPIENCY RATES

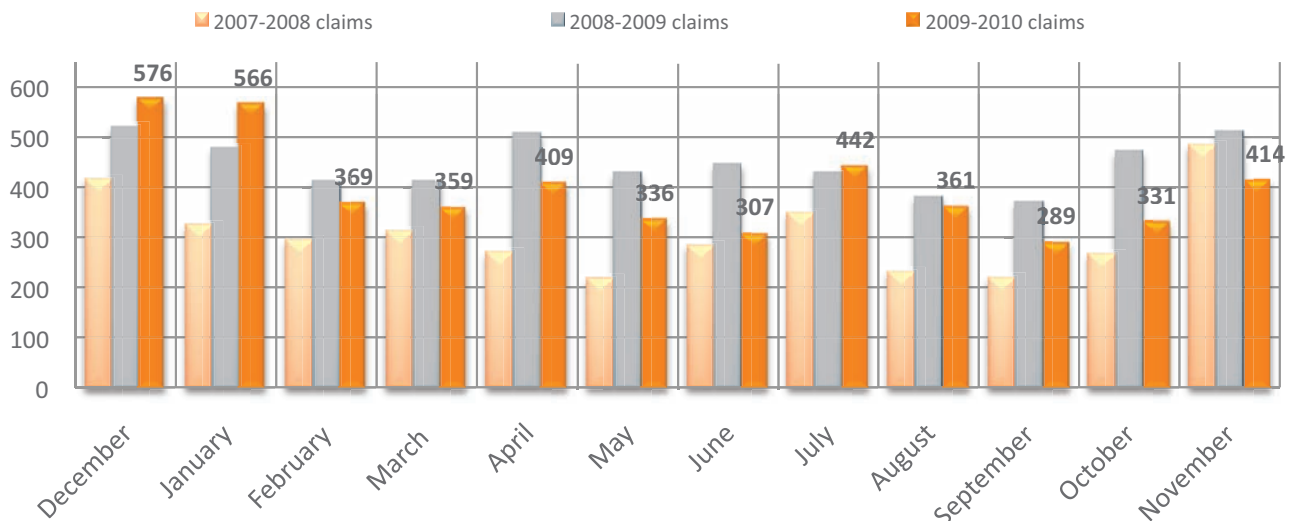
Wood County: 2003-2010



UI Reciprocity Rates: Ratio of continued claims to total unemployment on a monthly basis. Percentage of unemployed individuals covered by unemployment insurance.

Source: Wisconsin Department of Workforce Development

WOOD COUNTY INITIAL INSURANCE CLAIMS



Source: Wisconsin Department of Workforce Development

WOOD COUNTY ECONOMIC SUPPORT

(WOOD COUNTY - HUMAN SERVICES)

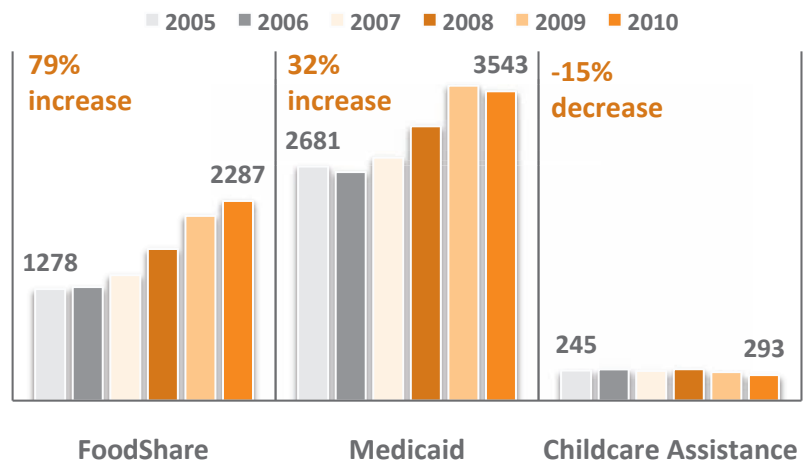
The Economic Support Snapshot graph shows that FoodShare and Medicaid assistance has grown dramatically over years 2005-2010. The food assistance program has surged upwards by 79% over the period. Likewise, the medical assistance program has increased by 32%. Both programs have experienced large increases which underscore the contention that local family financial distress in SWC has been growing at an alarming rate. Childcare assistance during the same period has remained flat. This can be partly explained by the population decline of younger families. It is also speculated that since childcare assistance eligibility includes employment, and with historically high unemployment levels now existing in the area, fewer families than ever would qualify for childcare assistance.

Emergency Assistance in SWC accounted for 88% of the Wood County total. The graphs below help to remind us that the north Wood County area economy is dominated by a robust health care industry, while south Wood County economy has been dominated by a financially troubled paper manufacturing sector and its related industries.

ECONOMIC SUPPORT SNAPSHOT

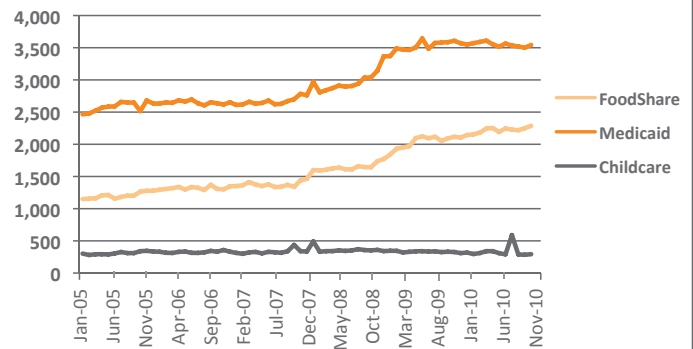
November 2005-2010 Caseloads
South Wood County

Source: Wood County Human Services ¹⁰



ECONOMIC SUPPORT: CASELOAD TRENDS

South Wood County



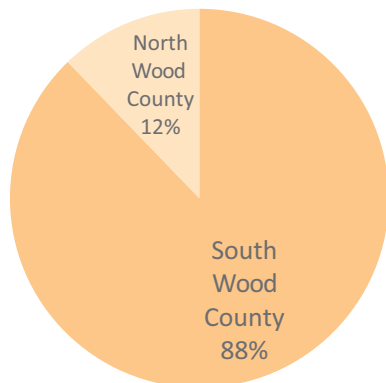
Source: Wood County Human Services ¹⁰

EMERGENCY ASSISTANCE

(Defined as families must have current emergency of impending homelessness, energy crisis, fire, flood or natural disaster.)

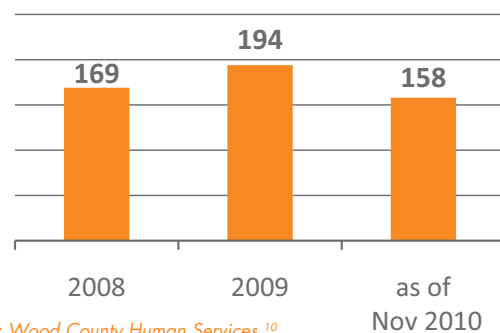
% of application by Wood County area as of November 2010

Source: Wood County Human Services ¹⁰



EMERGENCY ASSISTANCE:

of applications, South Wood County



Source: Wood County Human Services ¹⁰

SUMMARY OF THE VITAL SIGNS DATA

FOR SOUTH WOOD COUNTY

The Vital Signs Indicators show that south Wood County has experienced a marked deterioration in the well being of its citizens. South Wood County has been hit hard by the recession and by the structural changes taking place in the manufacturing sector. For examples, increasing foreign competition in paper manufacturing industry and the decline of the traditional paper media have played major roles in the economic decline of south Wood County. The ripple effects of the changes have permeated the local area economy. Data on foreclosure filings, population trends, school enrollments, economic disadvantaged students, homeless students,

unemployment numbers, initial unemployment claims, families needing economic support and other measures of social well being for the area all show that there has been an increase in the level of family financial distress. The Indicators also show that this problem, while exacerbated by the recent recession, is more than just a cyclical phenomenon. The problems facing south Wood County are structural in nature and while some improvement will take place when the economy eventually rebounds to pre-recession levels, the systemic part of the problem will remain unless the community continues to redevelop and reinvent itself.

This report is available online at incouragecf.org

SOURCES AND CREDENTIALS

FOR THE VITAL SIGNS REPORT MARCH 2011

- 1 Wisconsin. Access to the Public Records of the Consolidated Court Automation Programs (CCAP). , 2011. Web. 1 Feb 2011. <<http://wcca.wicourts.gov/>>.
- 2 "Record 2.9 Million U.S. Properties Receive Foreclosure Filings in 2010 ." MarketWire 13 Jan 2011. Realty Trac. Web. 1 Feb 2011. <<http://www.realtytrac.com>>.
- 3 Wisconsin. Final Population Estimates & Census Counts for Wisconsin Counties and Municipalities: 1970 - 2010 . Madison: Department of Administration, 2008. Web. 9 Dec 2010. <<http://www.doa.state.wi.us/docs>>.
- 4 "Economic Forecaster." Demographics Report 4th Quarter 2010. Economic Modeling Specialists Inc. (EMSI). Web. 10 Nov 2010.
- 5 Wisconsin. Wisconsin's Information Network for Successful Schools (WINSS). Madison: Department of Public Instruction, 2010. Web. 1 Mar 2010. <<http://data.dpi.state.wi.us/data/>>.
- 6 Wisconsin. Number of Students Identified as Homeless Reported by the School District. Madison: Department of Public Instruction, 2010. Web. 1 Mar 2010. <<http://dpi.wi.gov/homeless>>.
- 7 Wisconsin. South Wood County Homelessness Initiative Committee., 2010. Print.
- 8 United States. Local Area Unemployment Statistics. Washington DC: Bureau of Labor Statistics (BLS), 2010. Web. 1 Dec 2010. <<http://data.bls.gov/pdq/SurveyOutputServlet>>.
- 9 Barroilhet, Dan. Wisconsin. Unemployment Insurance Claims by County. Madison: Department of Workforce Development , 2010. Web. 1 Dec 2010.
- 10 Wood County, Wisconsin. CARES-RP612A reports. Wisconsin Rapids: Wood County Human Services, 2010. Print.

South Wood County includes the following areas:

Biron; Grand Rapids; Nekoosa; Pittsville; Port Edwards; Rudolph; Vesper and Wisconsin Rapids, Wisconsin

Greater South Wood County includes:

All of the above plus Rome, Wisconsin

Special thanks to all the local individuals and organizations that helped us collect this data.



incourage
community foundation

478 East Grand Avenue
Wisconsin Rapids WI 54494

www.incouragecf.org

