



WORKFORCE CENTRAL

Established in 2008, Workforce Central is a program of Incorporate Community Foundation comprised of three leadership groups: Funders Collaborative, Service Providers Network; Manufacturing CEO Peer Council. The Funders Collaborative is comprised of 25 Wisconsin philanthropic investors. Collaborative members pool resources and award grants focused on improving residents' access to quality jobs and businesses' access to qualified workers. It has established a sector-specific manufacturing partnership that identifies and leverages investments to advance a dual customer strategy – mutually benefiting employers and workers.

Workforce Central is one of 31 National Fund for Workforce Solutions (NFWS) sites, a national initiative to improve the workforce system through a place-based, sector-specific, dual focus strategy. Led by 10 national philanthropic investors, NFWS is the recipient of a Social Innovation Fund grant through the Corporation for National and Community Service. Workforce Central is a SIF sub-grantee and has leveraged this grant with local philanthropic match, resulting in increased impact for local employers and workers.

MANUFACTURING PARTNERSHIP

Launched in fall 2009, Incorporate Community Foundation's **Workforce Central Manufacturing Partnership** is a local, industry driven approach to workforce development that is focused on achieving the highly skilled workforce required for businesses to grow and maintain a competitive edge.

Manufacturing Partnership:

- **CEO Peer Council:** A local network of 11 Manufacturing CEOs who meet monthly to explore and share best practices for an improved, skilled workforce and enhanced organizational growth. An industry expert facilitates the Peer Council. This group of local leaders has established a charter and is committed to operate in an environment of mutual respect and confidentiality.
- **Organizational Training Assessments:** Customized training assessments help businesses identify specific worker training needs that will have a direct and substantial impact on productivity, competitiveness, and/or employee compensation.
- **Worker Training Grants:** Grants are available to employer-sponsored industry-specific training that has a direct and substantial impact on productivity, competitiveness or employee compensation.
- **The Ultimate Source of Manufacturing Competitiveness Guide:** The guide examines good practice examples of employers who are actively investing in workforce skill upgrades.
- **Collaborative Training:** Partnership businesses collaborate with Mid-State Technical College and the workforce development system.

Collaborative training efforts include:

- **Manufacturing Leadership** a series of MSTC certificates that can be taken individually or ladder into an Associate Degree. Courses are taught on a schedule convenient to three shifts. More than 75 current or potential manufacturing supervisors have participated with 18 already having earned a Supervision certificate.
- **Food Manufacturing Science** program developed by MSTC with members of the Peer Council. Currently available to WIA dislocated worker eligible adults. 31 Individuals have participated to date, with 18 having completed the program with 12 now employed.
- **MSSC-Manufacturing Skills Standard Certification:** job seekers and current manufacturing workers will be trained and certified with the MSSC credential; ensuring local manufacturers have a skilled workforce for the 21st century.
- **Food Stamp Employment and Training (FSET) Industrial Manufacturing Certification** will be offered and include basic manufacturing fundamentals in safety, quality, production, and maintenance.

Partnership Businesses

Ocean Spray Cranberries, Inc., Wisconsin Rapids, WI
Corenso North America, Wisconsin Rapids, WI
Mariani Packing Co. Inc., Wisconsin Rapids, WI
ERCO Worldwide, Port Edwards, WI
Energy Composites Corporation, Wisconsin Rapids, WI
NewPage, Biron, WI
Fey Printing Company, Wisconsin Rapids, WI
McCain Foods USA, Inc., Plover, WI
Kickapoo Valley Cheese, Sherry, WI
Golden County Foods, Plover, WI
Foremost Farms, Plover, WI

For more information: www.incorporatecf.org


incourage

community foundation

Workforce Central Collaborative

Supporting Economic Growth and Job Creation

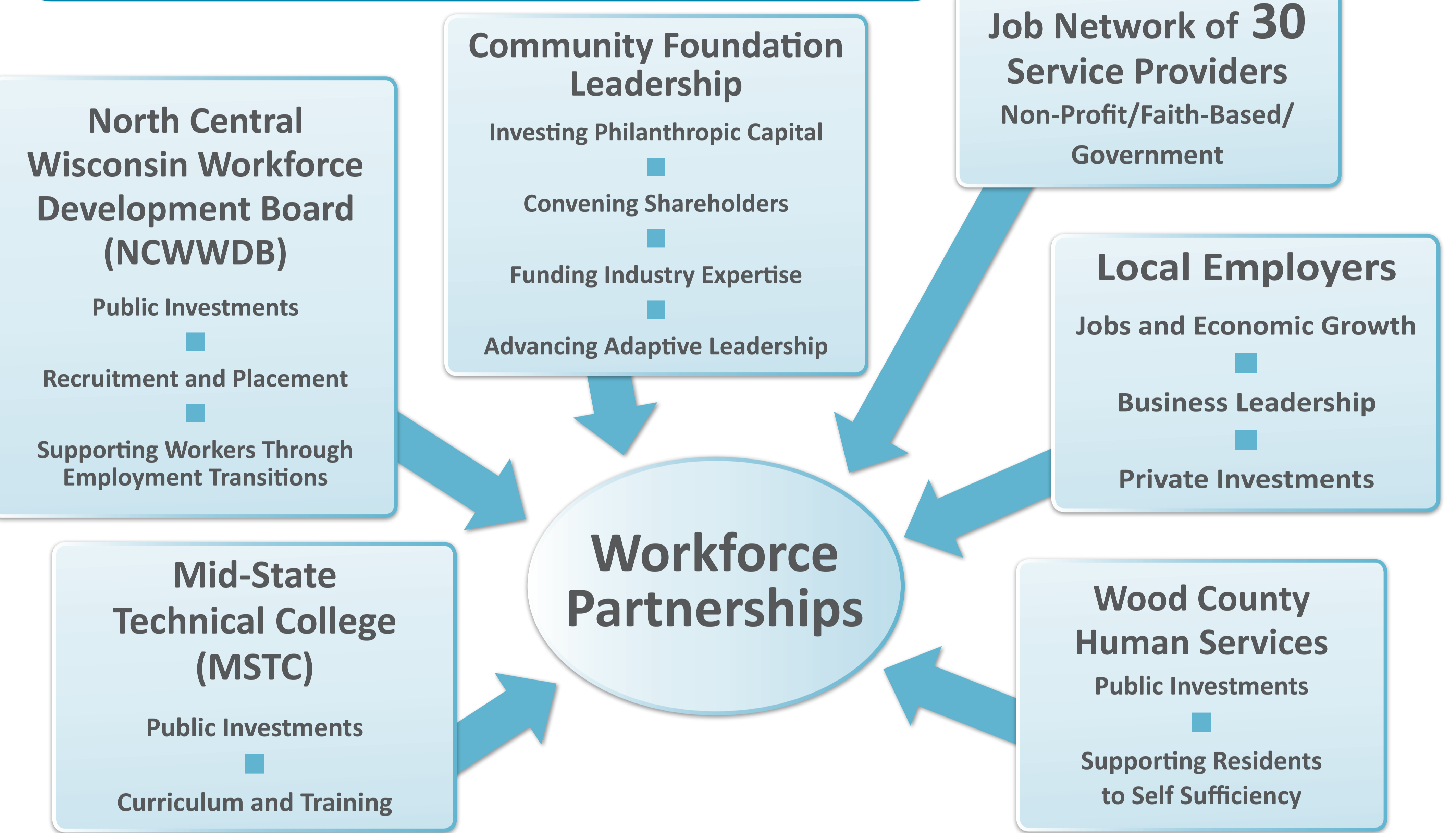
Investments to Date: Over \$2.3 Million

- \$200,000 NFWS 
- \$1 million Investors from Wisconsin
- \$357,000 Federal, State and Local
- \$400,000 NFWS/SIF
- \$312,000 Workforce Investment Act
- \$72,000 Employers

South Wood County area population: 40,000



PARTNERS = COLLECTIVE IMPACT



HELPING EMPLOYERS GROW
Industry Driven Impact

Current:

- Advanced Manufacturing Sector
- \$2 billion+ sales
- 9 businesses
- 3,000+ local employees

IT Occupational Sector Emerging

Anticipated 2012:

- Health Care Sector

PUTTING PEOPLE TO WORK
Jobs That Support Families

- 75 Manufacturing Manager Skill Upgrades
- 500 Slated for High Skilled Manufacturing Certifications
- 89 Low Skilled Adult Job Seekers Connected to Careers
- 31 Dislocated Workers Equipped with Industry Driven Training

PUBLIC POLICIES THAT MAKE SENSE
Aligning and Leveraging Resources

Regional Economic Development Snapshot: Aligning Business and Community Development Resources

- Vital Signs Report: Quality Information about our Community
- Critical Work Supports: Access during times of Employment Transition
- SameBoat with MIT: Innovative Information Sharing and Helping People Get Jobs

25 Investors from Wisconsin


Help Us Help Our Community Grow Jobs. Ask Us How.

incourage
community foundation
715.423.3863
hello@incouragecf.org